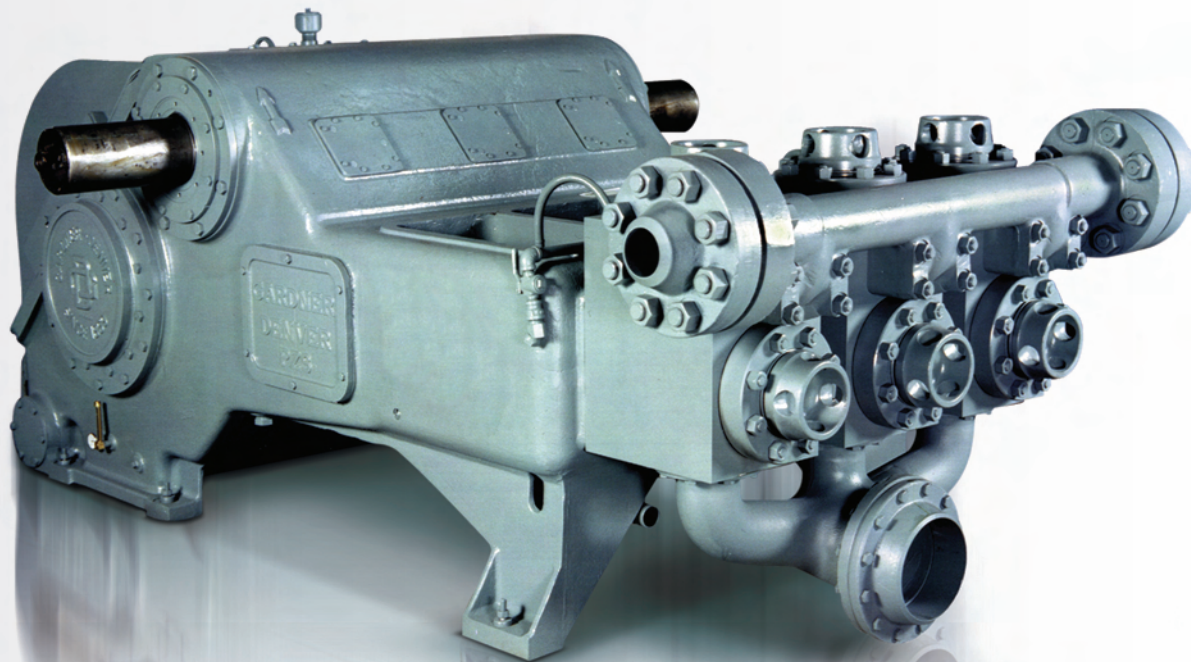


Pumping Perfected.™

DRILLING PUMPS



Gardner
Denver



For over one hundred and fifty years, Gardner Denver has continually set new standards with unique pump designs and advanced manufacturing materials that deliver the utmost in reliability. Today, we continue to innovate and improve to ensure you benefit from products that provide the perfect combination of performance and durability to maximize uptime on every project. Around the world, across an array of applications, we offer the broadest product range in the industry backed by the quality and technology you expect from Gardner Denver.

DRILLING PUMPS



Just as reliability is a key concept behind our drilling pumps so is our commitment to quality workmanship and performance. That's why around the world, Gardner Denver is renowned for providing dependable, continuous duty, long-life drilling pumps. They simply don't come any stronger, or better. Rugged construction and lasting reliability make our family of drilling pumps the preferred choice for both offshore and land installations where superior performance is required. Whether it's durable pumps for highly mobile, land based rig operations, pumps for workover and shallow drilling applications or pumps designed specifically for the offshore market, count on Gardner Denver to deliver pumping perfection on every job.

Pumping Perfected.

**Gardner
Denver**



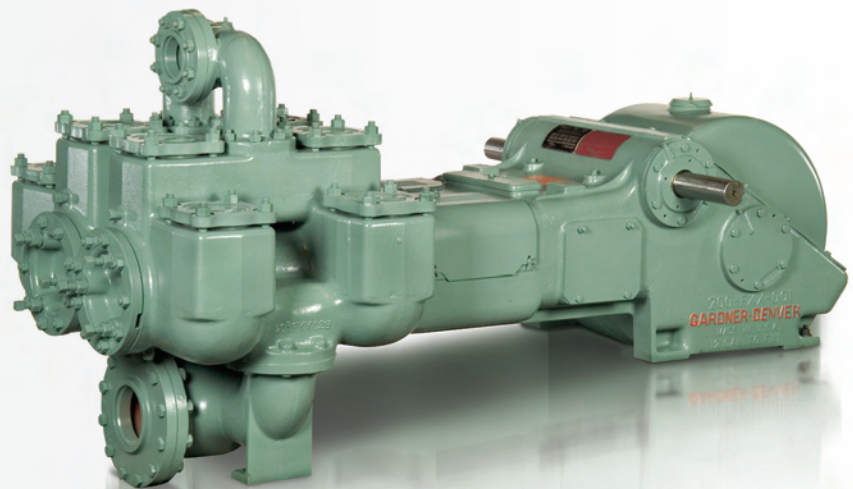
DRILLING PUMPS

The preferred choice for both offshore and land based drilling contractors who demand superior performance and uncompromised reliability. Gardner Denver's family of drilling pumps are used in a variety of applications from highly mobile, shallow drilling rigs to severe duty operations in the unconventional shale plays.

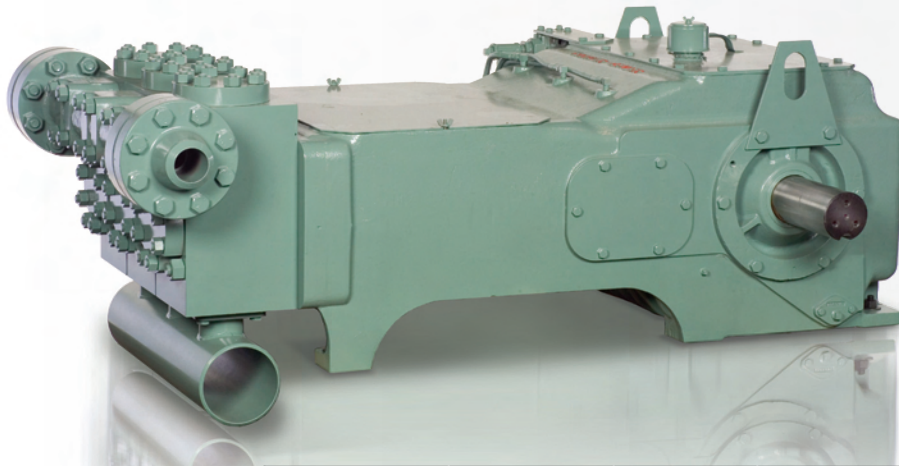
Pump Model	Power		Stroke		Sizes		Max Flow Rate		Max Pressure	
	(BHP)	(kW)	(in.)	(mm)	(in.)	(mm)	(GPM)	(m ³ /hr)	(PSI)	(bar)
PAH	275	205	8	203.2	3-5	76.2-127.0	357	81	3,118	215
PZ-7 (PZG)	550	410	7	177.8	4-7	101.6-177.8	507	115	5,000	345
PZ-8 (PZH)	750	559	8	203.2	4-7	101.6-177.8	580	132	5,000	345
PZ-9 (PZJ)	1,000	746	9	228.6	4-7	101.6-177.8	585	133	5,000	345
PZ-10 (PZK)	1,350	1,007	10	254.0	5.5-7	139.7-177.8	575	131	5,000	345
PZ-11 (PZL)	1,600	1,193	11	279.4	5.5-7.25	139.7-184.2	678	154	5,000	345
PZ-11HP (PZL HP)	1,600	1,193	11	279.4	5-7	127.0-177.8	632	144	7,500	517
PXL	2,000	1,491	11	279.4	5-7.25	127.0-184.2	678	154	7,500	517

DUPLEX DRILLING PUMPS

Equipped with high strength cast iron or steel fluid cylinders, Gardner Denver's proven line of duplex power pumps rise to the challenge every time to meet the demands of a range of oil field applications including shallow oil and water well drilling.



Pump Model	Power		Stroke		Sizes		Max Flow Rate		Max Pressure	
	(BHP)	(kW)	(in.)	(mm)	(in.)	(mm)	(GPM)	(m ³ /hr)	(PSI)	(bar)
FXF	16	12	5	127.0	2.5-4.5	63.5-114.3	121	27	640	44
FXG	32	24	6	152.4	3-5	76.2-127.0	150	34	895	62
FXX	52	39	8	203.2	3-7.5	76.2-190.5	420	95	1,136	78
FXD	85	63	10	254.0	3-7.5	76.2-190.5	487	111	1,500	103
FXE	100	75	10	254.0	3-7.5	76.2-190.5	487	111	1,900	131



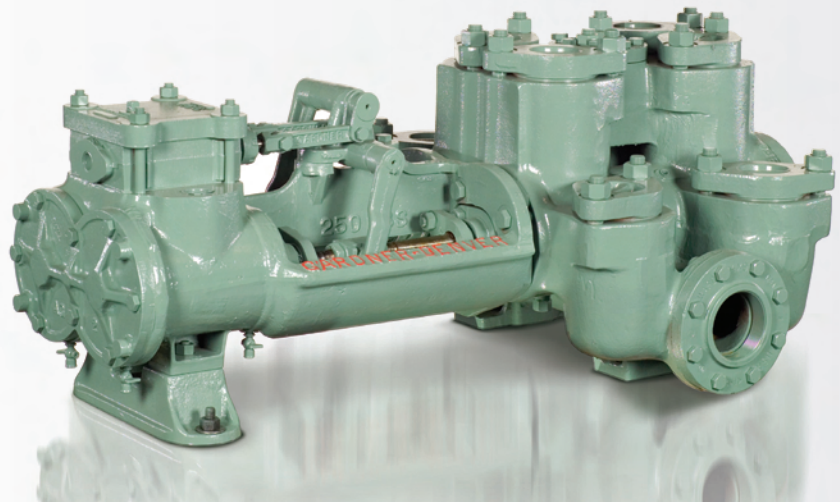
WELL SERVICING PUMPS

The benchmark for quality and durability, Gardner Denver offers a wide range of rugged, heavy duty well servicing pumps as well as versatile and maintenance friendly units for use in a variety of workover and well service applications.

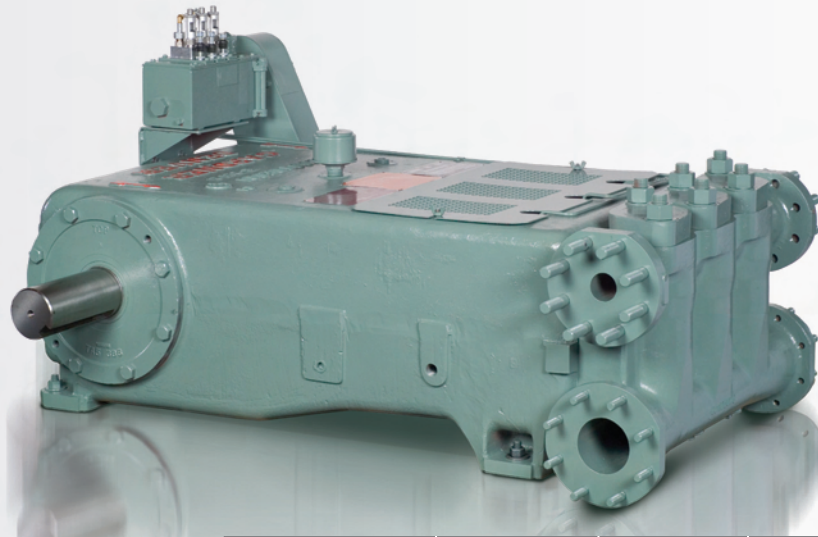
Pump Model	Power		Stroke		Sizes		Max Flow Rate		Max Pressure	
	(BHP)	(kW)	(in.)	(mm)	(in.)	(mm)	(GPM)	(m ³ /hr)	(PSI)	(bar)
TEE	165	123	5	127.0	1.75-4	44.5-101.6	245	56	10,000	689
TGE	165	123	5	127.0	1.75-4	44.5-101.6	245	56	10,000	689
THE	215	160	5	127.0	4-5.5	101.6-140.0	462	105	2,950	203
GD-250	250	186	5	127.0	2-5	50.8-127.0	362	82	15,000	1,034
PAH	310	231	8	203.2	3-5	76.2-127.0	357	81	10,000	689
TGH	400	298	8	203.2	3-5	76.2-127.0	357	81	10,000	689
GD-600	600	447	6	152.4	2.75-5	69.9-127.0	688	156	16,845	1,161
GD-Compact	600	447	6	152.4	2.75-4.5	69.9-114.3	558	127	16,845	1,161
GD-1000Q	1,000	746	6	152.4	2.75-4.5	69.9-114.3	929	211	17,852	1,231
GD-1250	1,250	932	8	203.2	3.75-6.5	95.3-165.1	1,135	258	18,100	1,248

DUPLEX STEAM PUMPS

For decades Gardner Denver's family of duplex steam pumps has been counted on to perform in a variety of pumping applications. From boiler feed to chemical transfer, they have endured the test of time and stand as a testimony to Gardner Denver quality and reliability.



Pump Model	Stroke		Sizes		Max Steam Pressure		Maximum Flow Rate		Maximum Pressure	
	(in.)	(mm)	(in.)	(mm)	(PSI)	(bar)	(GPM)	(m ³ /hr)	(PSI)	(bar)
DAA	3	76.2	1.5	38.1	250	17	9	2	250	17
DAB	3	76.2	2	50.8	250	17	16	4	250	17
DAG	6	152.4	2.5-5	63.5-127.0	250	17	180	41	900	62
DFS	10	254.0	2.5-7.5	63.5-190.5	400	28	450	102	3,580	247



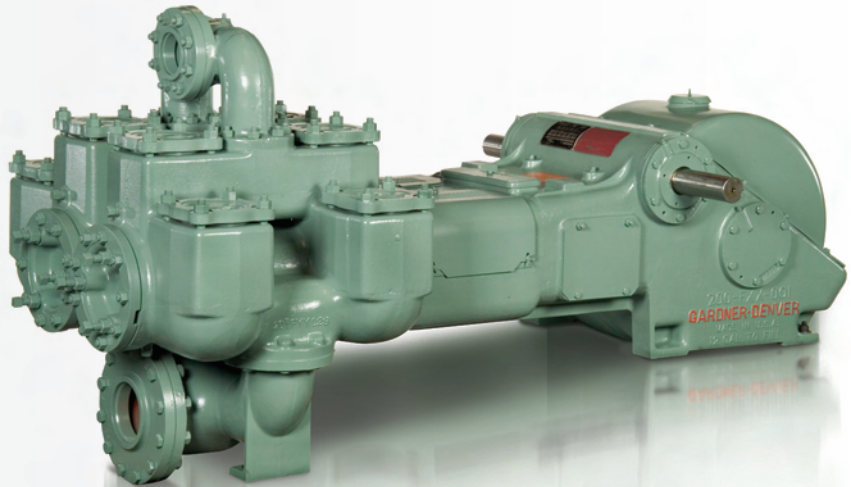
PRODUCTION & INDUSTRIAL PUMPS

Our family of reciprocating triplex plunger pumps is used in multiple production and industrial applications. With many fluid end combinations and horsepower ranges, they are ideal for saltwater disposal, steam recovery, pipeline testing, water blast and hydrocarbon service.

Pump Model	Power		Stroke		Sizes		Max Flow Rate		Max Pressure	
	(BHP)	(kW)	(in.)	(mm)	(in.)	(mm)	(GPM)	(m ³ /hr)	(PSI)	(bar)
GD-25T (TQB)	25	19	2	50.8	1-2.25	25.4-57.2	62	14	2,250	155
GD-45T (TQW)	45	34	2.5	63.5	1-2.75	25.4-69.9	111	25	3,065	211
GD-50T (TQC)	50	37	3	76.2	1.75-3	44.5-76.2	110	25	2,060	142
GD-60T (TAC)	65	48	3	76.2	1-3	25.4-76.2	138	31	5,000	345
GD-100T (TDD)	100	75	4	101.6	1.75-3.5	44.5-88.9	213	48	2,980	205
GD-125T (TEE)	125	93	5	127.0	1-4	25.4-101.6	286	65	6,500	448
GD-135Q (QBX)	135	101	3.5	88.9	1.5-3	38.1-76.2	268	61	3,110	214
GD-150T (TAE)	150	112	5	127.0	1.25-4.25	31.8-108.0	341	77	7,845	541
GD-180T (TDE)	180	134	5	127.0	1.25-4.25	31.8-108.0	341	77	9,415	649
GD-200T (TFE)	205	153	5	127.0	1.25-4.25	31.8-108.0	341	77	10,000	689
GD-300Q (QAF)	300	224	6	152.4	1.375-4.5	34.9-114.3	764	174	5,000	345

DUPLEX PRODUCTION PUMPS

Gardner Denver Duplex Production pumps set the worldwide standard for general oilfield and industrial applications, such as oil line pumping, mine dewatering, boiler feed, chemical and petroleum products transfer.



Pump Model	Power		Stroke		Sizes		Max Flow Rate		Max Pressure	
	(BHP)	(kW)	(in.)	(mm)	(in.)	(mm)	(GPM)	(m ³ /hr)	(PSI)	(bar)
FXF	20	15	5	127.0	2.5-4.5	63.5-114.3	149	34	640	44
FXG	43	32	6	152.4	3-5	76.2-127.0	200	45	895	62
FXX	75	56	8	203.2	3-7.5	76.2-190.5	600	136	1,136	78
FXD	110	82	10	254.0	3-7.5	76.2-190.5	637	145	1,500	103
FXE	130	97	10	254.0	3-7.5	76.2-190.5	637	145	1,900	131

AFTER SERVICE EXCELLENCE

To ensure prompt and professional repairs and superior maintenance of our products, we offer the Gardner Denver Petroleum Pump Service Centers in Ft. Worth and Odessa, Texas. Here, skilled Gardner Denver personnel specialize in fluid end repair, power end overhaul, and genuine OEM spare parts for well service, drilling and production pumps. For quick turn around of onsite repairs, our Service Technicians are available to come directly to your operations for expert service.

**For repairs or more information, contact
our maintenance specialists at:**

7533 Kathy Lane
Ft. Worth, TX 76126
817-249-6400

2121 West 44th Street
Odessa, TX 79764
432-366-5433

2200 South Prospect
Oklahoma City, OK 73129
405-677-5736

www.pumpingperfected.com

Gardner **Denver**

Drilling & Production Pumps

Gardner Denver Pump Division
1800 Gardner Expressway
Quincy, IL 62305
Phone: 217-222-5400
Fax: 217-223-1581

Drilling & Production Aftermarket

Gardner Denver Pump Division
2200 South Prospect
Oklahoma City, OK 73129
Phone: 405-677-5736
Fax: 405-677-5807

Well Service Pumps

Gardner Denver Pump Division
4747 South 83rd East Avenue
Tulsa, OK 74145
Phone: 918-664-1151
Fax: 918-447-6487

Fort Worth Service Center

Gardner Denver Pump Division
7533 Kathy Lane
Fort Worth, TX 76126
Phone: 817-249-6400
Fax: 817-249-6383

Odessa Service Center

Gardner Denver Pump Division
2121 West 44th Street
Odessa, TX 79764
Phone: 432-366-5433
Fax: 432-363-9940